

Overview of visitor management measures in French national parks



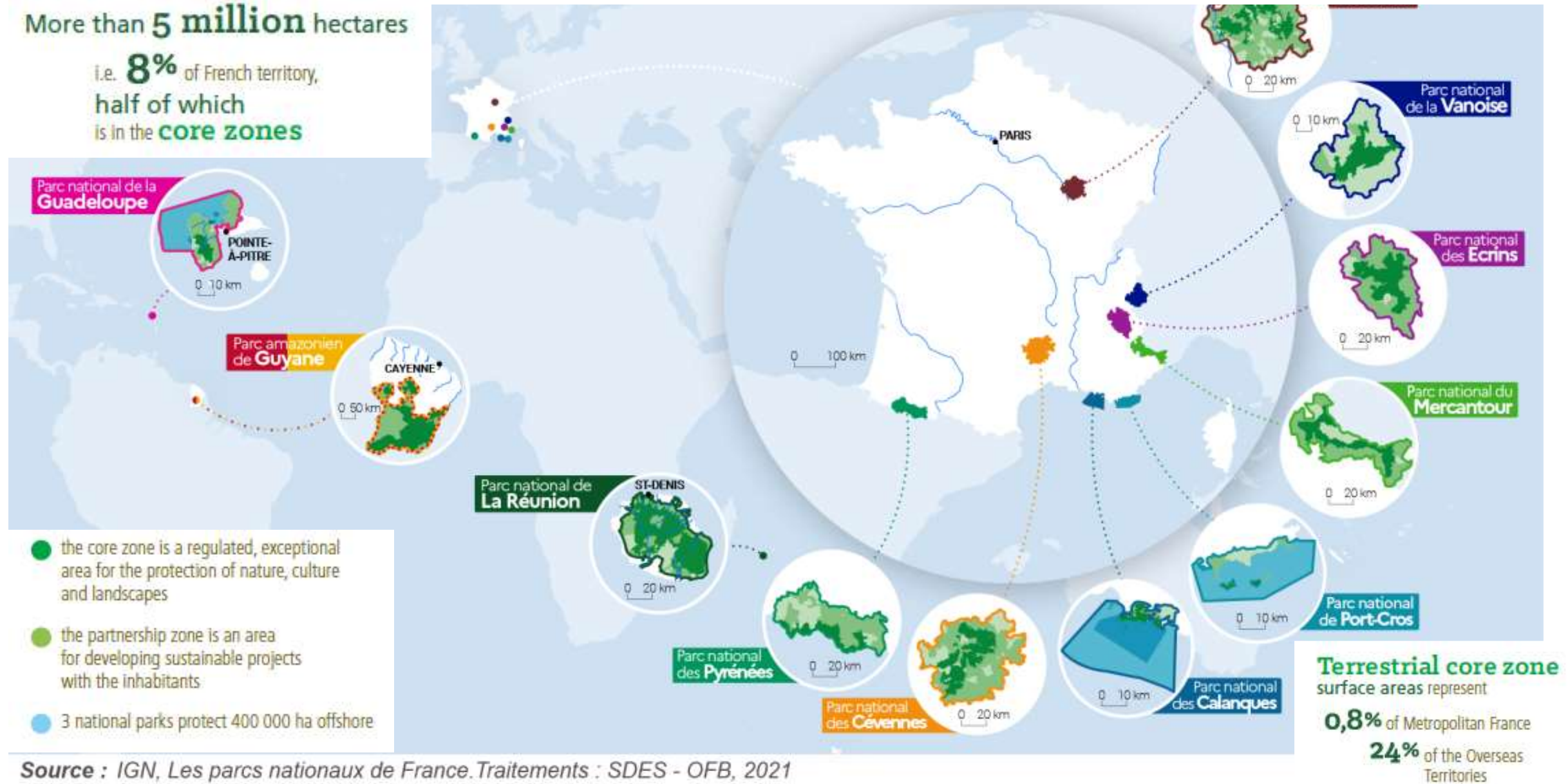
Corentin Mercier

Context

A network of 11 national parks for the preservation of remarkable landscapes, natural and cultural heritages

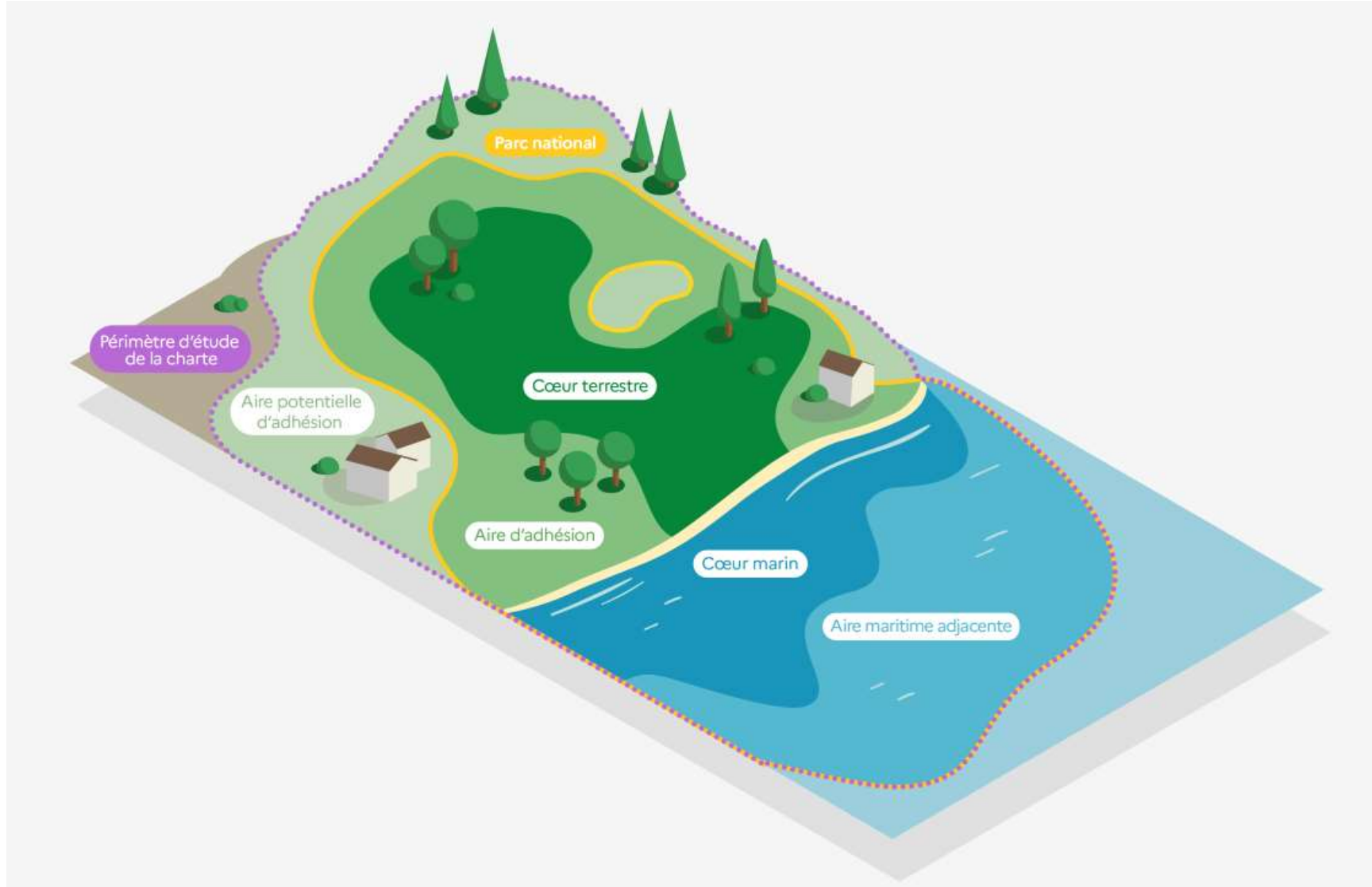
More than **5 million** hectares

i.e. **8%** of French territory,
half of which
is in the **core zones**



Source : IGN, Les parcs nationaux de France. Traitements : SDES - OFB, 2021

French national parks: a regulated core zone and a partnership area with local authorities



11 parks covering a large range ecosystems: from mediterranean coasts
and islands...



...to alpine highs and glaciers...



...and its characteristic fauna...



... through mighty Cévennes...



In continental France and overseas. Volcanic islands in the indian ocean...



...or tropical forests...



...And of course the Pyrénées!





National parks missions

(1) Knowledge and conservation of nature: Making biodiversity a priority!

- Preservation of threatened or heritage species
- Prevention of habitat fragmentation and ensuring the continuity of ecological corridors
- Scientific monitoring of biodiversity

With specific **law enforcement** forces





National parks missions

(1) It includes the preservation of cultural heritage!

- Transmission of traditional knowledge and know-how
- Restauration of built heritage





National parks missions

(2) National parks, a warm welcome!

- **Education and awareness raising** about nature, specifically among the younger generations
- **Sharing nature:** Parks are designed to help people discover nature. NPs offer information centers, network of hiking trails...
- **Free and open access for all,** (with its downside: potential overcrowding)





National parks missions

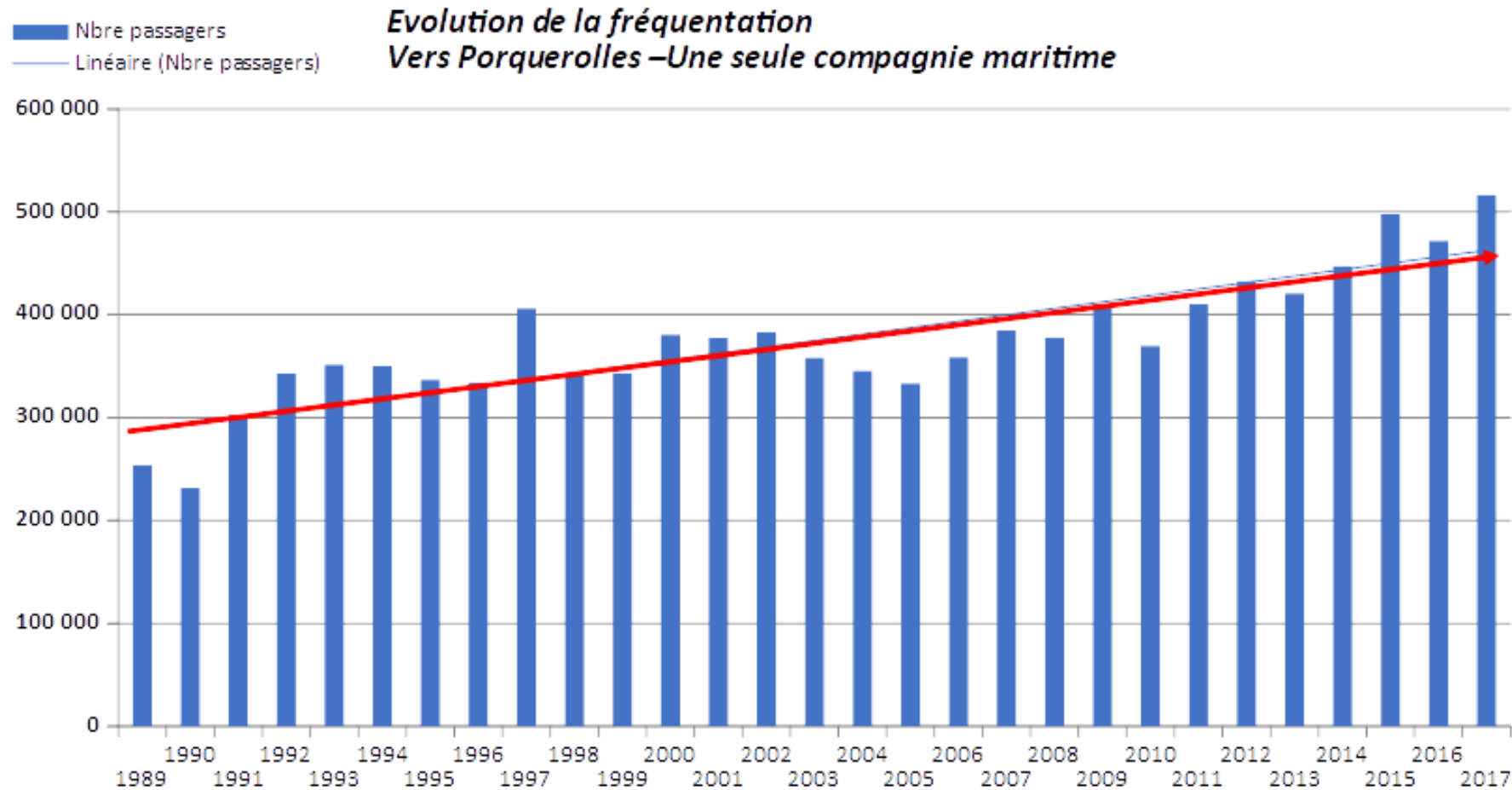
(3) Support local sustainable development

- Support local authorities in their efforts toward sustainable development (Energy, transport, agriculture...)
- Support local stakeholders in their efforts to preserve nature through its trade mark: *Esprit parc national*

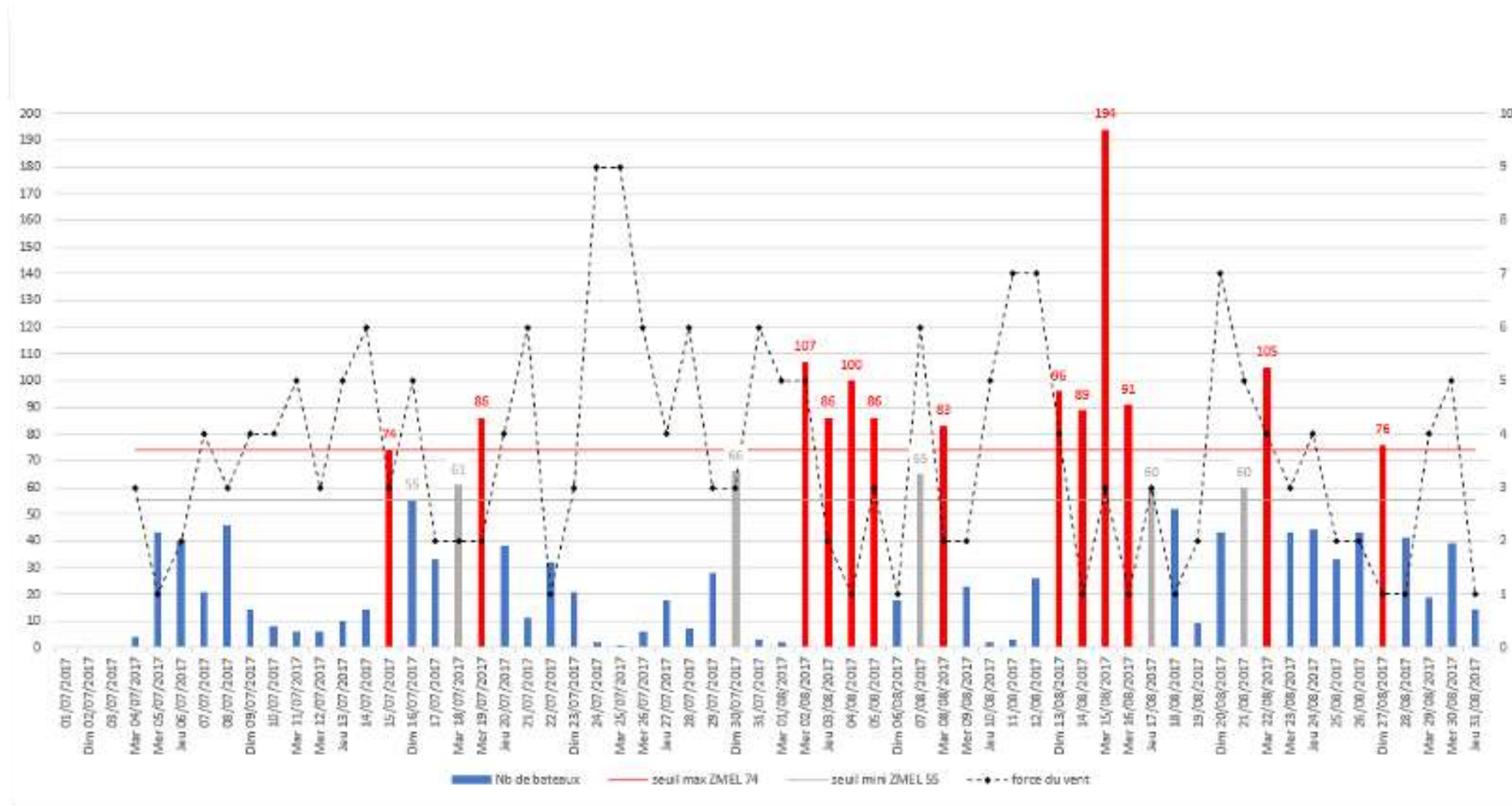


Overcrowding

A constant increase in visitors: desire for nature + post-covid effect



Visitor peak phenomenon



Comptage de bateaux à Port Cros – été 2017

Hyperfrequentation: huge effect on biodiversity, habitats... and visitor experience





Vers l'aménagement de ZMEL

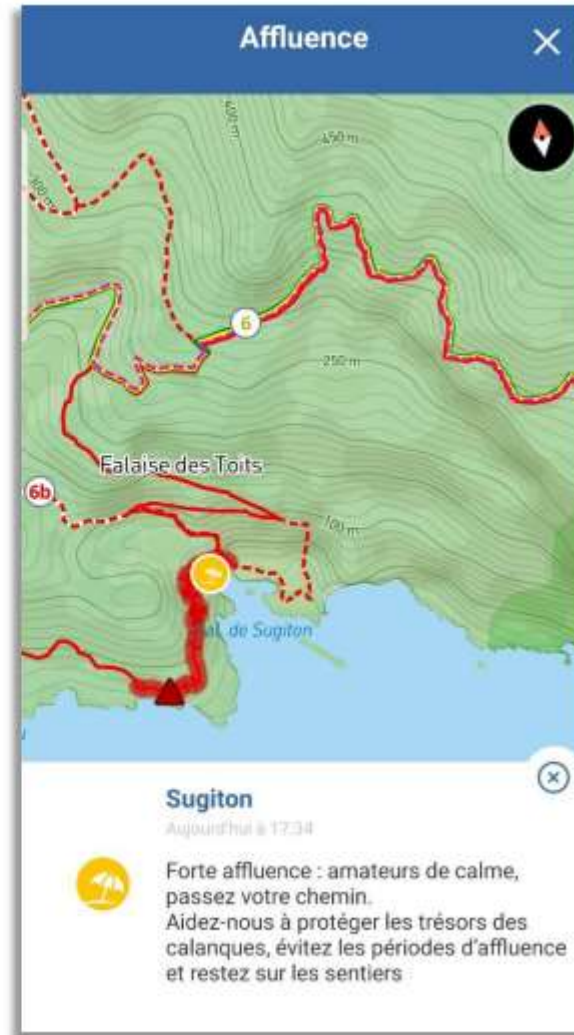
How to mitigate overcrowding: some
attempts in french national parks:

1/Information

2/Infrastructure3/Regulations

Timely and informed
communication

Stay connected: usign aps to inform visitors



Demarketing operation: tell the terrible truth to the visitor!



Survival in the Calanques

Having the right gear on the trails is important: sturdy footwear, sun protection, and at least 1.5 litres of water per person per half-day walk, even more in hot weather and for longer walks. Please do not disregard these recommendations: every year the emergency services save wounded, dehydrated, and exhausted visitors.

You won't find freshwater, toilets, shops, or waste bins on your trail or on [the beaches](#). Take your rubbish with you and sort it when you are back in town.

Protect yourself from the sun and protect marine life

Have a zero-plastic picnic in the Calanques!



...and survive the crowds!

If you are visiting the Calanques in spring and summer, prepare yourself for the crowds. Some of the most popular sites are bombarded with visitors. They include [Marseilleveyre](#), [Sormiou](#), [Sugiton](#), [En-Vau](#) and [Port-Pin](#), and the [Frioul archipelago](#).

If you don't mind crowds, be friendly with other visitors. Please stay on the [paths](#) and do not venture into areas marked by posts and wiring where plant regeneration is underway.

If you'd rather avoid the crowds, visit in autumn or winter, on weekdays, or during term time.

Make sense of the regulations



2/Infrastructure to mitigate
frequentation

On land: Withdraw cars, make it more difficult to come into the park

Phase 1

- Informations en amont sur restrictions de stationnement et de circulation
- Suppression stationnement Goudes – Callelongue
- Contrôle d'accès aux Goudes
- Renforcement ligne 20
- Fermeture ponctuelle de la route à Saména ou Vieille-Chapelle



Phase 2

- Informations en amont sur restrictions de stationnement et de circulation
- Suppression stationnement Saména – Goudes
- Pôle d'échanges Vieille-Chapelle
- Prolongement ligne 20 et voie réservée lignes 19 et 20
- Prolongement ligne 47 jusqu'au pôle d'échanges Vieille-Chapelle
- Nouvel accès et parking Pastré
- Fermeture ponctuelle de la route à Saména ou Vieille-Chapelle



But improve the visitor experience



3/Regulations



From 2500
person/day to 400
person/day

In Sugiton, from 10 July to 21 August, 2022, free access to the site is only permitted by making a prior booking.

At sea: Infrastructure + regulation



The image is a composite. On the left is a vertical infographic with a light blue background and a faint sea horizon. It contains six icons with corresponding text: a map of Corsica, an anchor with a slash, an 'OPEN' sign, a sun, a moon, and a sailboat. On the right is a photograph of a boat's stern in turquoise water, with a white buoy marked '03' visible. The infographic text includes area, mooring rules, opening dates, day/night rates, and capacity.

176 ha protégés

Mouillage de l'ancre interdit

Du 15/04 au 15/10

Journée
Libre et gratuit
08 h 00 à 18 h 00

Nuit
Payant et sur réservation
18 h 00 à 08 h 00

1 bouée = 1 bateau

1 pers. par bouée et 1 pers. en capacité de manœuvrer le bateau

Parc National de Port-Cros
181 Allée du Castel Sainte Claire
BP 70220
83406 - HYERES cedex

Parc national