

Policy change Of Entrance fee in Korea National Park



Contents

CONTENTS

01 General Status of Korea National Park

02 Park Entrance Fee Policy

03 Abolition of Park Entrance Fee

04 Management Change After Abolition

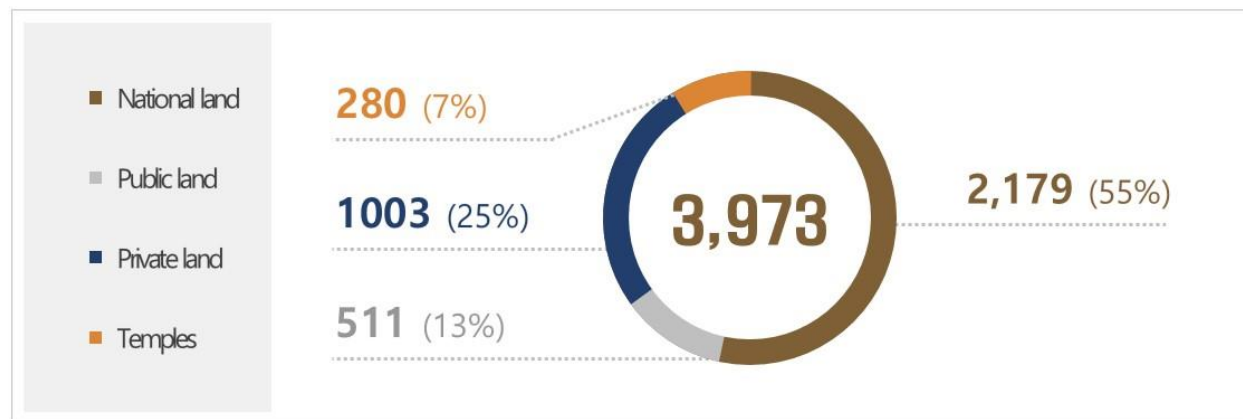
> About the Agency(KNPS)

- | **Number of employees** : 3,013p in total [Permanent (1,416p + 1,197p) / under contract 400p]
- | **Budget** : 497,700 million won (408 million US\$)

> About National Parks

- | **Number of Parks** : 22 parks in total
 - ◆ 18 Mountain / 3 Marine / 1 Historic type
- | **Total area** : 6,726 km²
 - ◆ about 4% of Korea's territory
- | **Number of visitors** : 43 million / year

| Land Ownership



02 Park Entrance Fee Policy



- ◆ History of park entrance fee
- ◆ Admission fee for cultural heritage
- ◆ Two ways of collecting fees



> History of Park Entrance Fee

- **Introduction** : When NP system was established in 1967, the fee was written in **National Park Act**
- **Purpose** : “**Beneficiary burden principle**” and used for park management expenses
- **Application** : First applied in 1970 at Sognisan NP. (Five NPs in total at that time)



Mountain Park



Marine Park

➤ Admission fee for cultural heritage

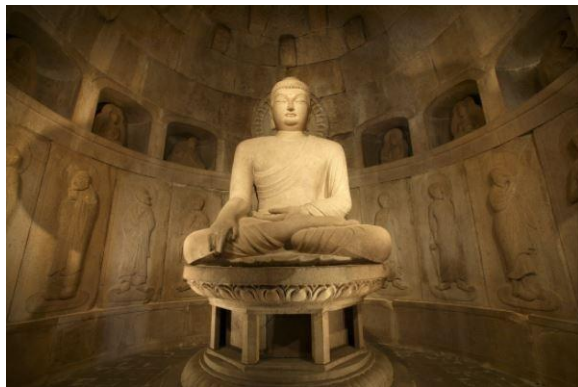
* Korea is a Buddhist country so that there are a lot of cultural heritages related to temples which are often located in mountains.

Introduction : Admission fee was introduced in 1962 by Cultural Heritage Protection Act

Only applied for traditional temples, which is 67 in Korea. There are 23 within National Parks out of 67.

Purpose : To enable the public to have the right to watch cultural heritage

Note : Started collecting the admission fee together with park entrance fee in 1975



Buddha Statu



Buddhist scriptures



Pagoda on the mountain

➤ Two ways of collecting fees

- **No traditional temple** : Only park authority used to collect park entrance fee
- **Traditional temple existed** : Park authority and temple collected together both park entrance fee and admission fee
- **Period** : Park Entrance fee: 1970~2006
Admission fee for cultural heritage: 1970 ~ current

* Function of park entrance fee: Controlling the number of visitors and used for park management expenses



Hwaumsa Temple



Haeinsa Temple



Abolishing park entrance fee on 1st Jan in 2007

03

Background of Entrance Fee Abolition



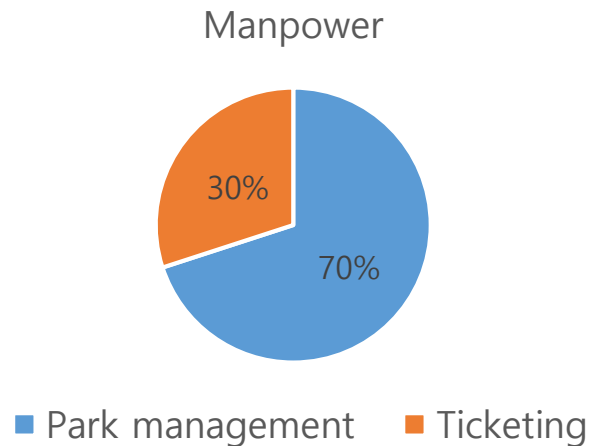
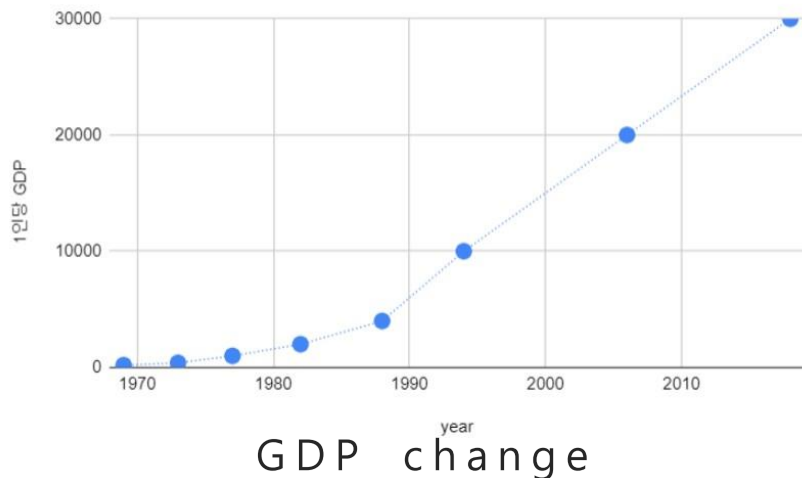
- ◆ Change in social perception
- ◆ Government Policy



> Change in Social Perception

- General Status** : High level of national education and income since 2000
- Internal factor** : 30% of employees committed to collecting the entrance fee causing manpower shortage
- External factor** : Growing civil compliment due to having to pay without watching cultural heritages

* Function of park entrance fee: Controlling the number of visitors and used for park management



Against unreasonable admission fee

> Government Policy

Keynote of Policy : President No MuHyeon('03~08) pursued universal welfare and working class oriented policy

* National Parks are for the citizens, not for government. Everyone deserves to visit.

Abolished in 2007: To let everyone visit NPs, park entrance fee was abolished in 2007

* 70% agreed on national survey, the amount of fee was 1,600won(=1.2US\$)

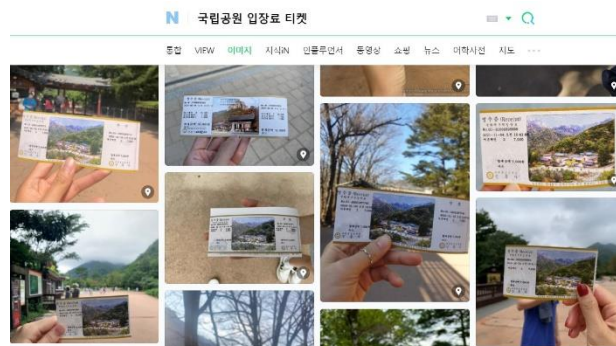
Note : Admission fee for cultural heritae keeps remained.

* The fee exists in 12 parks out of 22

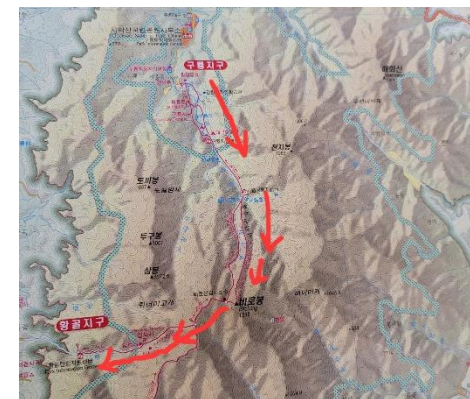
◆ Visitors can choose the entrance since there are many entrances



President No MuHyeon



Ticket for park entrance fee



Choices to start

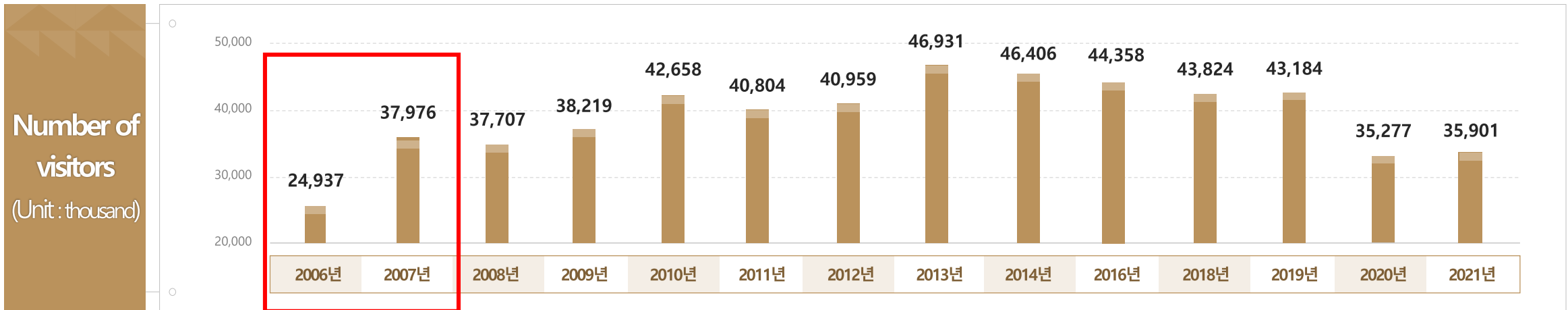
04

Management change after Abolition



- ◆ Increased in visitor numbers
- ◆ Equivalent to increasing manpower
- ◆ Introducing new visitor management policies
- ◆ The result of park entrance fee abolition

> Increased in visitor numbers



2007 : Abolished park entrance fee (52% up)

2013~2014 : Hiking trend was peak

2020~21 : Covid-19(18% down)



Park Entrance

➤ Equivalent to increasing manpower

■ **Manpower re-location** : 30% of total employees were re-located to other park management work

* Visitor Service, patrolling, nature resources monitoring, more efforts in safety issues etc

■ **Introducing a New Patrol team** : initially 165 patrolman in 2008 and 400 in 2022

Interpreter



Patrol team



Rescue



➤ Introducing new visitor management policies

Trail reservation policy : Necessary to make a reservation in advance of visiting

- ◆ Firstly Chilseon valley trail in Jirisan in 2008, 22 trails in 15 parks at current

Time-limiting policy for hiking : Each trail leading to the peak has time-limiting to start

One-way trail policy : During high season and peak time, allowing only one way to make it flow



Before reservation policy



After reservation policy



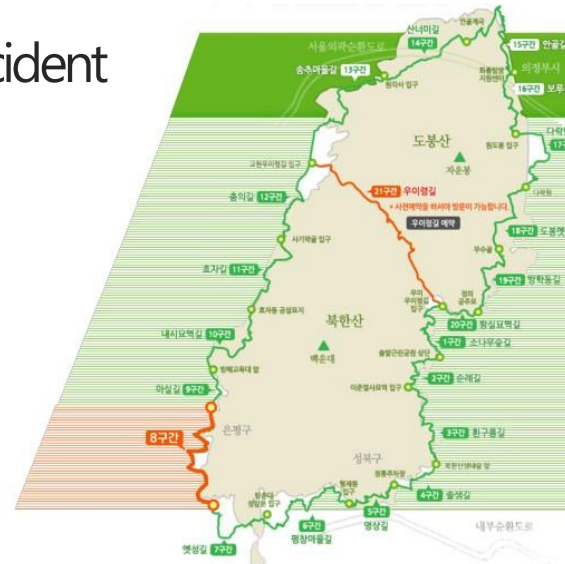
TV Ad regarding Time-limiting

➤ Introducing new visitor management policies

- Automatic counting system** : Installing the automatic system to count the number of visitors at each entrance
 - ◆ 351 places in 21 NPs
- Dulegil(Roop) trail** : Keeping the visitors down part of mountains
- Trail rating system** : Reducing negligent accident



Automatic counting system



Bukhansan Dulegil



Trail rating system

➤ The result of park entrance fee abolition

Positive effect

- ◆ The welfare of the public has gone up. (More people, Better visit service)
- ◆ Relative business sector has been boomed up such as hiking, camping sector

Negative effect

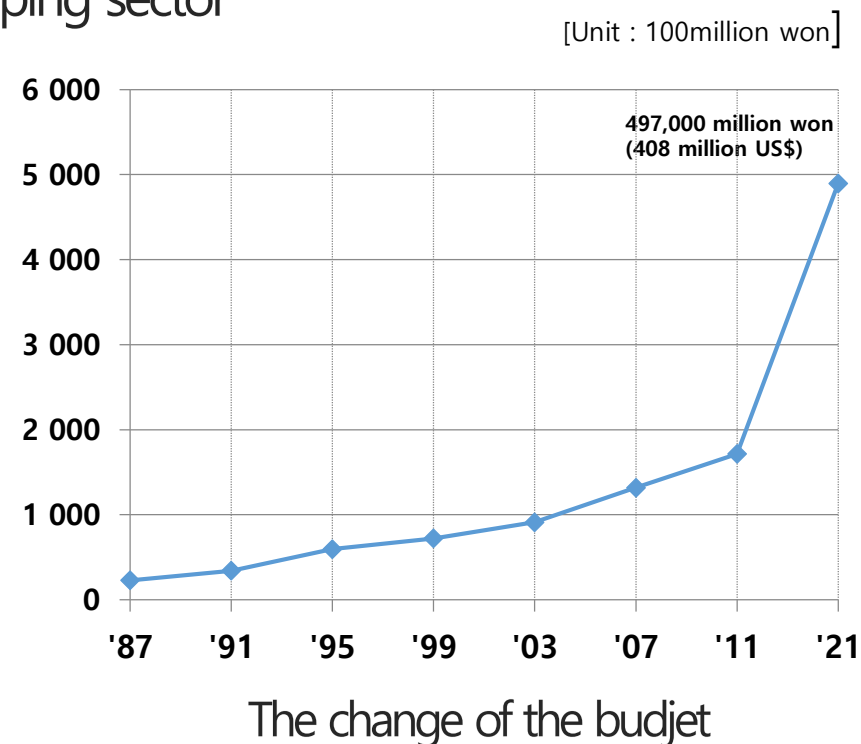
- ◆ Government financial burden has got increased.



Nature Center



Camping ground



Korea National Park Service

Thank you

• T H A N K Y O U •

